



Ministry of Health and Sports (Myanmar)

Department of Public Health

Central Epidemiology Unit

(6 June 2020)

Coronavirus Disease 2019 (COVID-19)

Situation Report - 60

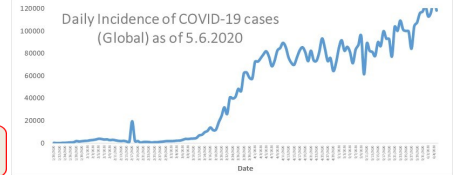
Data as reported by States and Regions by 01:00AM MST 6 June 2020

Global Situation
(WHO situation report - 137)
data as of 14:30 MST 5 June 2020

Confirmed cases
6,535,354

Deaths
387,155

Case Fatality Rate
5.9 %



Myanmar Situation

Total tested
35,432

Confirmed cases
236

Negative
35,196

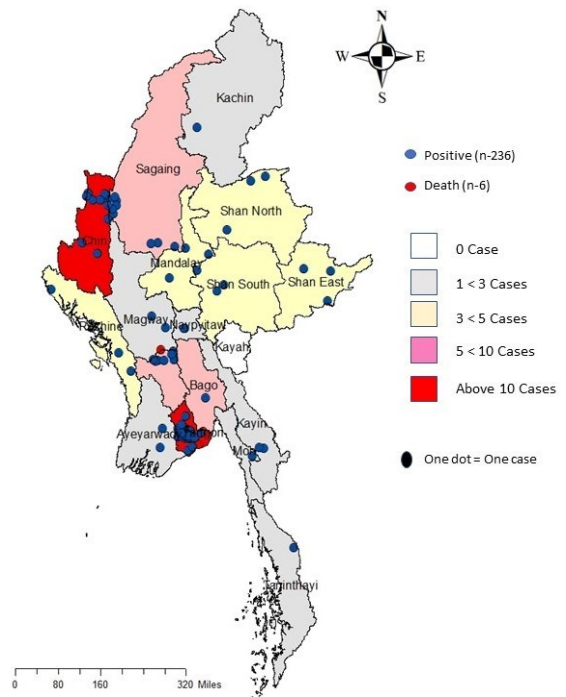
Recovered
156
66.1 % of confirmed cases

Active
74
31.3% of confirmed cases

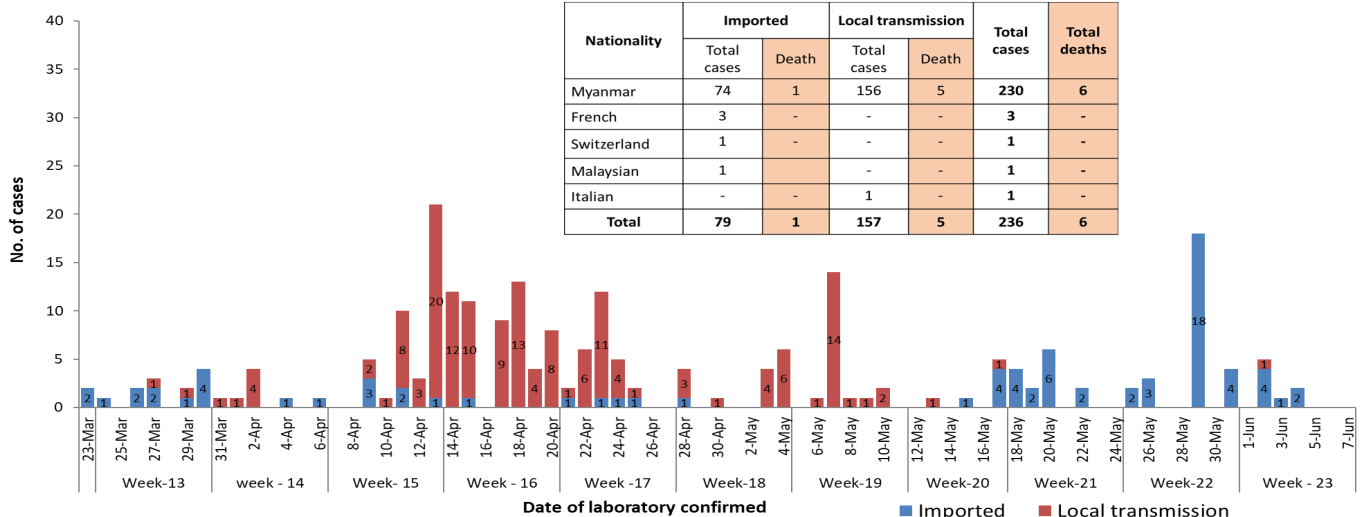
Death
6
2.5% of confirmed cases

No.	State/Region	COVID -19 Confirmed case	Recovered	Deaths
1.	Yangon	183	121 (5 New)	5
2.	Chin	10	3	-
3.	Sagaing	9	7	-
4.	Bago	8	6	1
5.	Shan(East)	3	3	-
6.	Mandalay	3	3	-
7.	Shan(South)	3	2	-
8.	Shan(North)	3	2	-
9.	Rakhine	3	-	-
10.	Naypyitaw	2	2	-
11.	Kayin	2	1	-
12.	Magway	2	2	-
13.	Ayeyarwaddy	2	1	-
14.	Mon	1	1	-
15.	Kachin	1	1	-
16.	Thanintharyi	1	1	-
17.	Kayah	-	-	-
Total		236	156 (5 new)	6

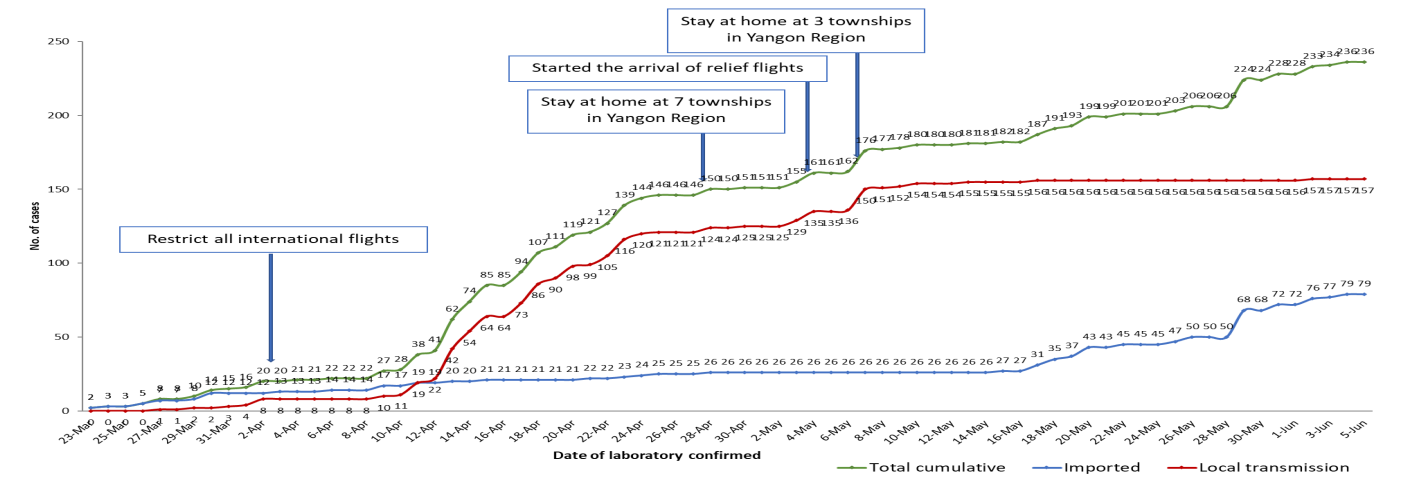
Map showing COVID-19 laboratory confirmed cases



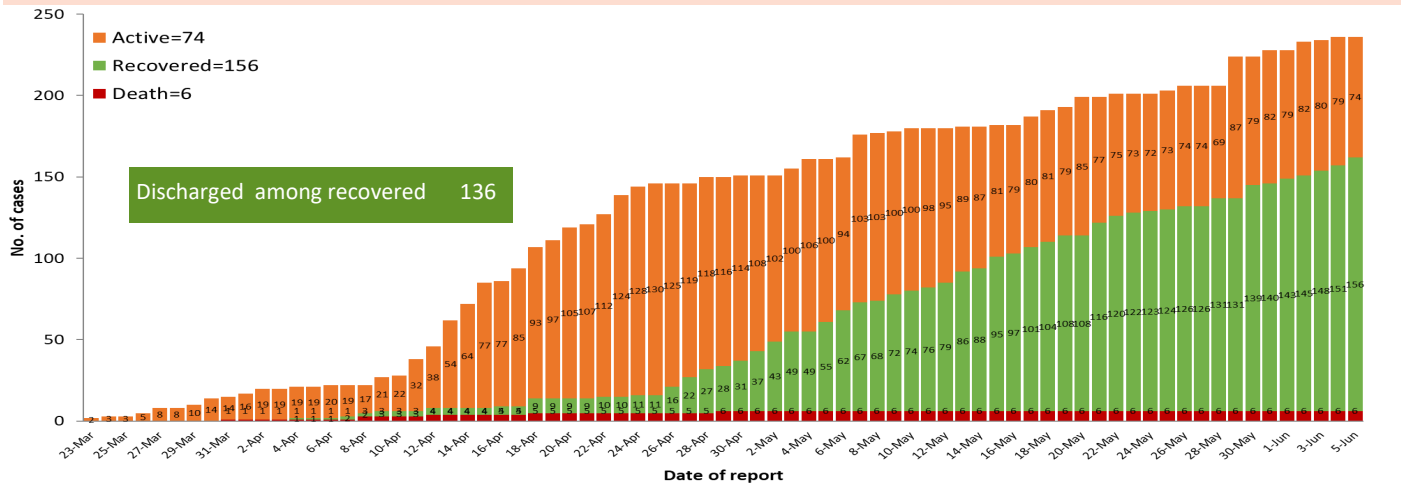
COVID-19 confirmed cases by types of transmissions (as of 6-6-2020,01:00 am) n=236



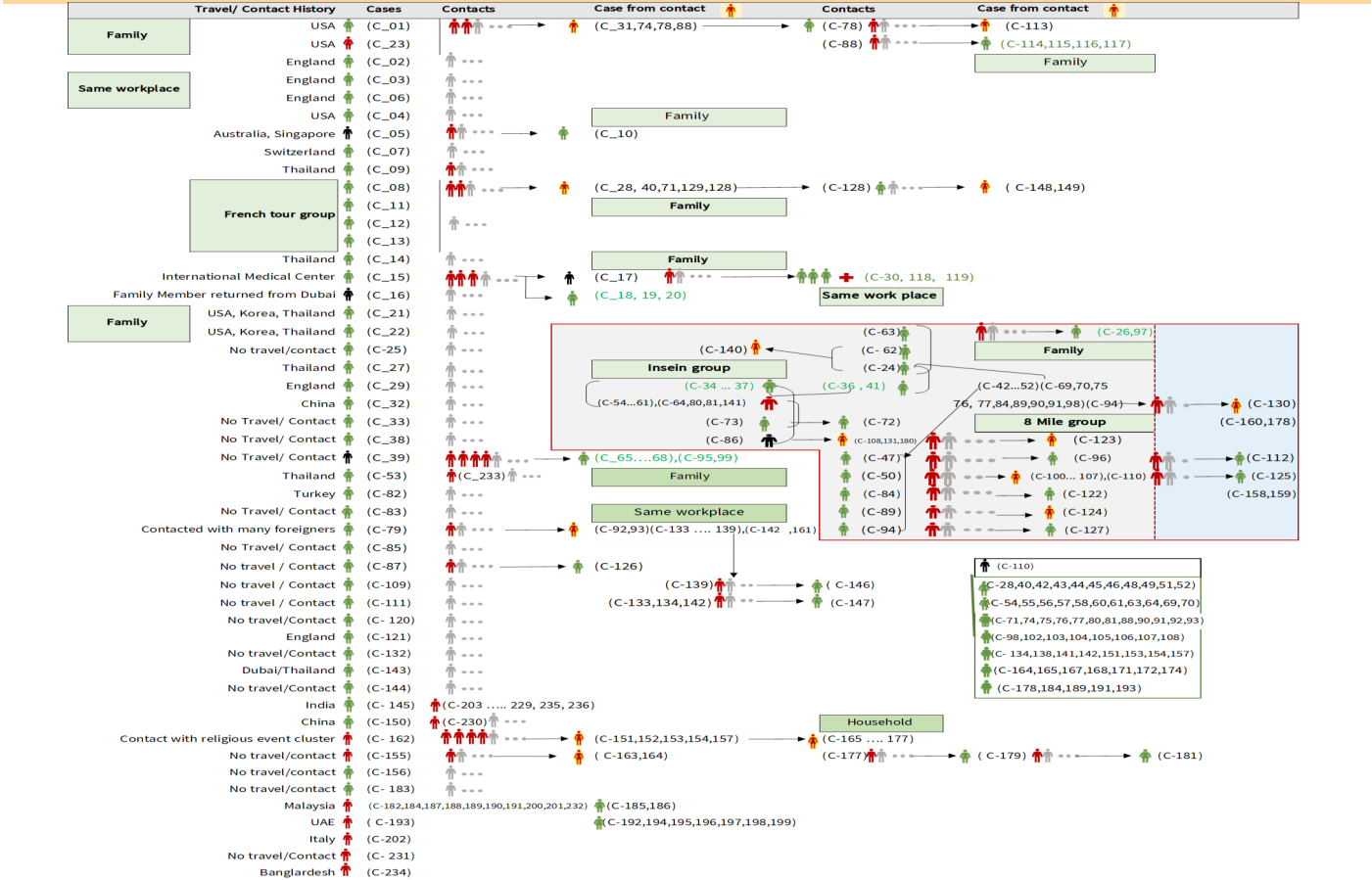
Total laboratory confirmed cases by date (as of 6.6.2020, 01:00 am), n= 236



Cumulative Number of active confirmed cases, recovered and deaths (23.3.2020 – 5-6-2020), n (cumulative)=236



Summary of COVID-19 confirmed cases (as of 5-6-2020) ,n (contacts)= 4,943

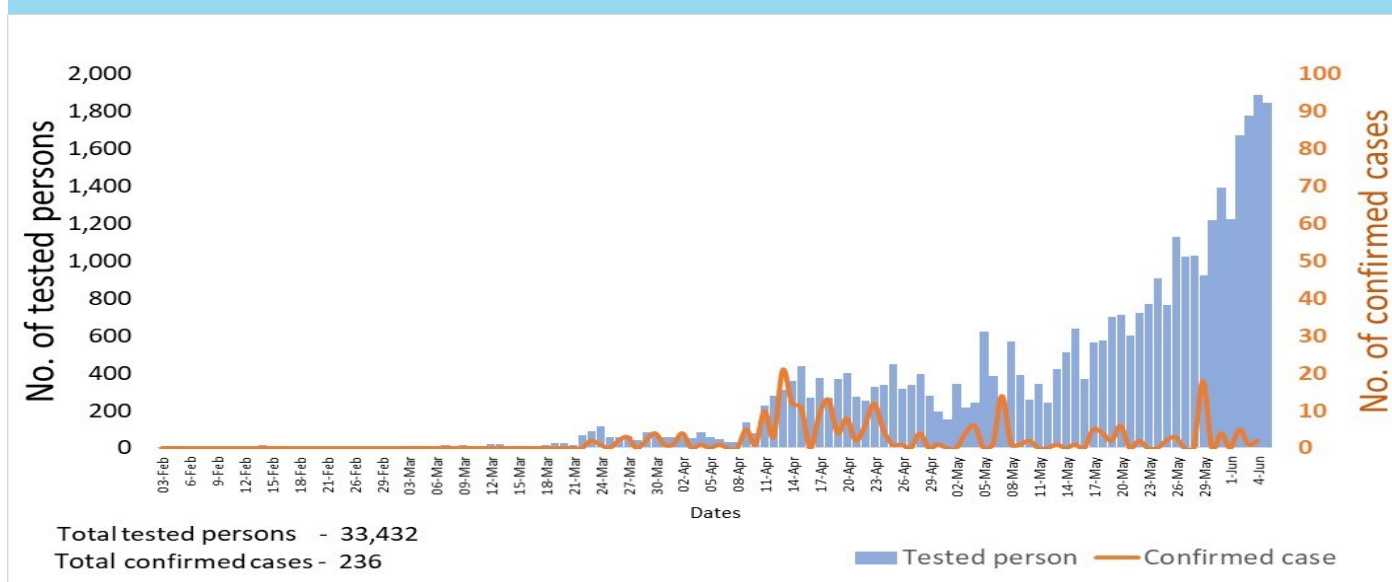


Summary of current situation

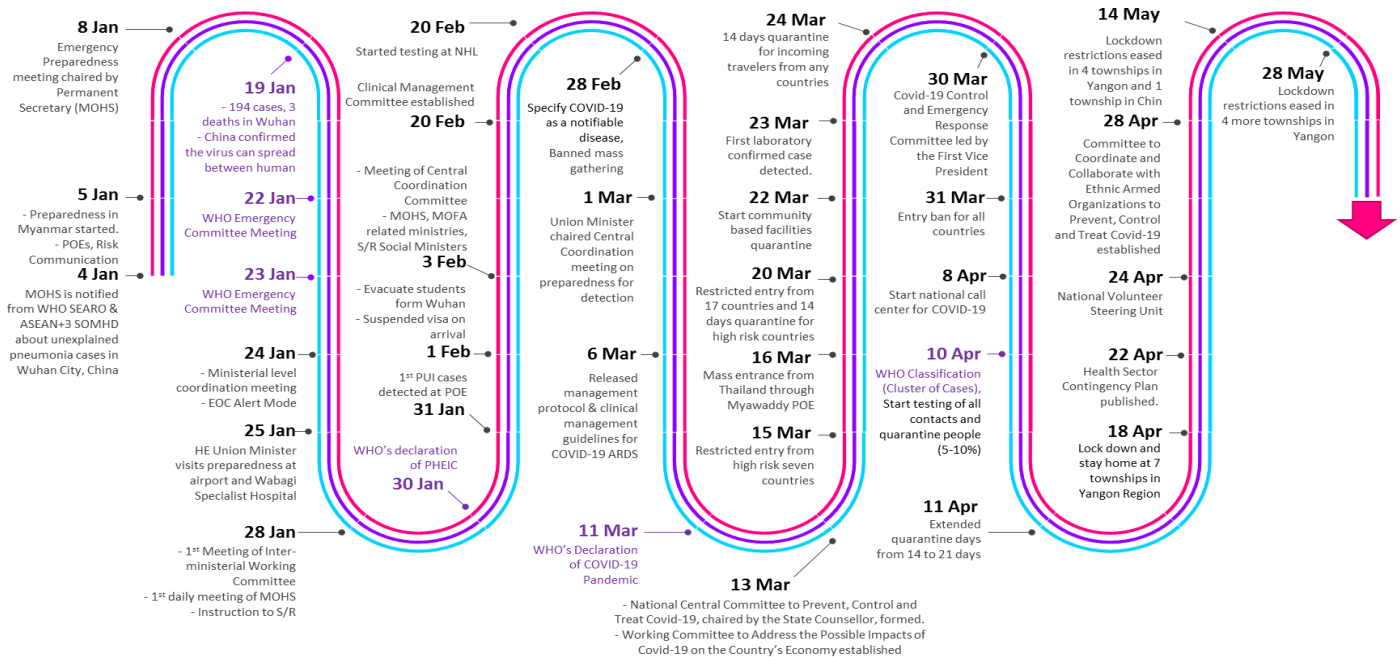
Type	New (4.6.2020-5.6.2020)	Total (on 5.6.2020)
Suspected and Person Under Investigation (PUI)	52	288
Hospital Quarantine	31	122
Facility Quarantine	1,899	48,430

Person under Investigation (PUI) by State/Region hospitals (31.1.2020 – 5.6.2020) n= 5,260			No. of Facility Quarantine sites and Quarantined people on 5.6.2020			
No.	State/Region	PUI	No.	State/Region	No. of facilities	Total no. of quaran-tine
1.	Yangon	2,722	1.	Magway	2,866	9,968
2.	Mandalay	957	2.	Bago	552	5,892
3.	Mon	195	3.	Kachin	709	5,113
4.	Shan(N)	189	4.	Mandalay	549	3,914
5.	Kayin	181	5.	Sagaing	1,856	3,879
6.	Bago	174	6.	Rakhine	650	3,156
7.	Magway	173	7.	Kayin	549	2,889
8.	Shan (E)	107	8.	Yangon	70	2,654
9	Ayeyarwaddy	96	9	Ayeyarwaddy	739	2,565
10.	Shan(S)	92	10.	Mon	88	2,219
11.	Sagaing	79	11.	Shan North	422	1,859
12.	Kayah	74	12.	Shan S	131	1,393
13.	Rakhine	61	13.	Naypyitaw	19	1,223
14.	Naypyitaw	60	14.	Tanintharyi	189	1,001
15.	Thanintharyi	52	15.	Chin	40	310
16.	Kachin	27	16.	Kayah	18	227
17.	Chin	21	17.	Shan East	11	168
Total		5,260	Total		9,458	48,430

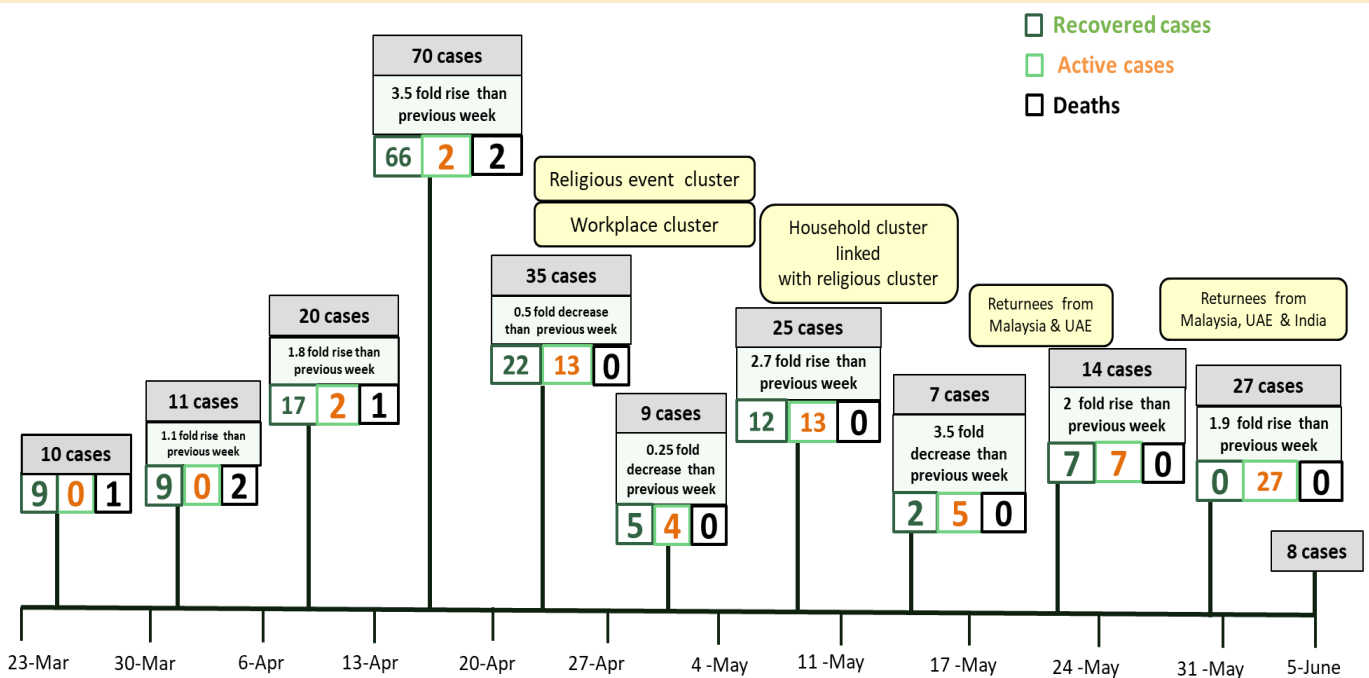
COVID-19 confirmed cases among tested by date (as of 5.6.2020)



Timeline of Preparedness and Response to COVID-19 in Myanmar (as of 5.6.2020)



Summary of new confirmed cases detection after first two cases (as of 5.6.2020)



- Confirmed cases were detected as peak in the 4th week after first confirmed cases due to religious event cluster.
- Confirmed cases were decreased but still raised than the first 3 weeks due to religious event cluster and workplace cluster.
- There were an increased in numbers of cases in the 7th week after the first two cases due to household cluster linked with religious cluster.
- Confirmed cases were detected by nearly two fold rise in the 9th and 10th weeks after first two cases because of returnees coming back by relief flights.